



Harmony Wellness Counseling & Consulting Center, LLC



20 Impact 23 Report

WHAT'S INSIDE

- 2** **2023 At a Glance**
- 3** Welcome & Demographic Report

- 6** **Who We Are**
- 7** History
- 8** Mission Statement & Vision
- 9** Core Values
- 10** Goals
- 11** Statement from the CEO
- 12** Together We Thrive
- 13** Our Dynamic Team
- 14** Training Hours & Certifications

- 15** **What We Do**
- 17** Hours of Services Provided

- 18** **Finances & Donations**
- 19** Donations
- 20** Fiscal Year 2022 Financial
- 21** Impact/Revenue



01

20 AT A 23 GLANCE





Harmony Wellness
Counseling &
Consulting Center, LLC

Harmony Wellness Counseling and Consulting Center (HWCCC), LLC is a dedicated mental health agency serving over 105 clients across Maryland. HWCCC provides comprehensive counseling services tailored to the diverse needs of children, teens, young adults, adults, and seniors. Our expert team of therapists offers personalized care designed to support emotional well-being and foster resilience at every stage of life. Whether helping children navigate developmental challenges, guiding teens and young adults through life transitions, or assisting adults and seniors with the complexities of aging and personal growth, Harmony Wellness is committed to nurturing mental health and creating a supportive, healing environment for the entire community.

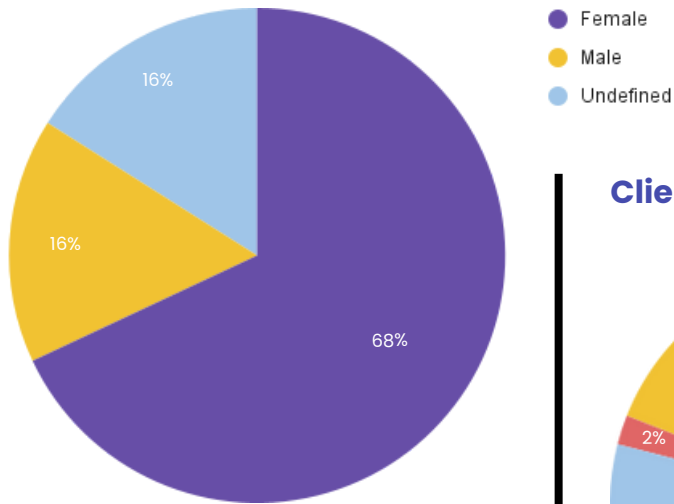
Demographic Report

Highlighting sex, race, age, sexual orientation, and marital status.

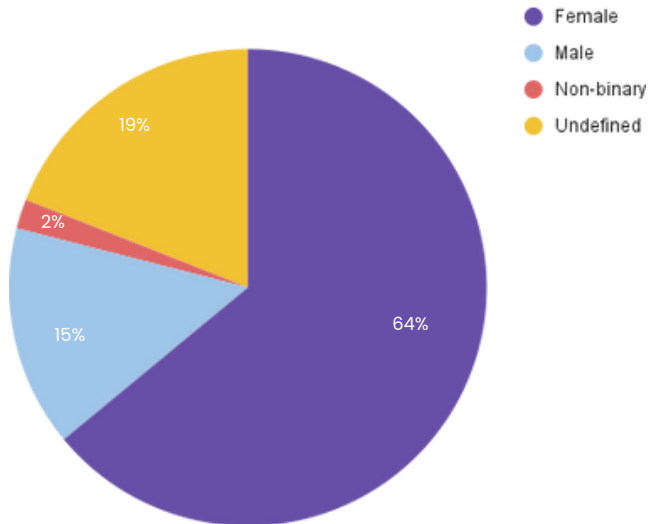


Primary Counties
Covered:
Prince George, Anne
Arundel, and Howard
Counties

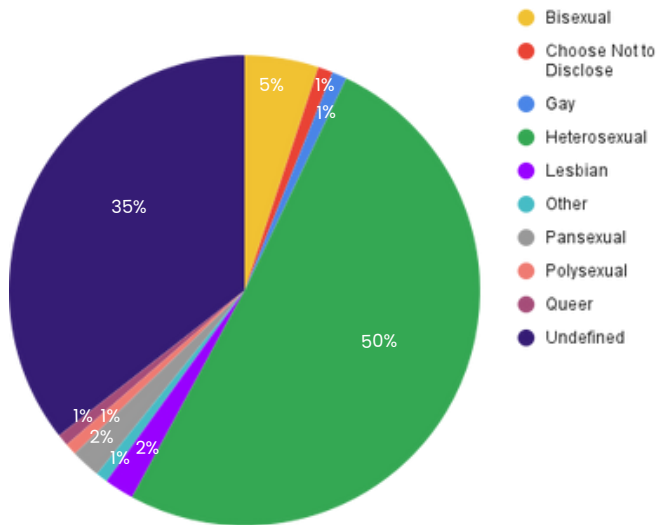
Clients distribution by Legal Sex



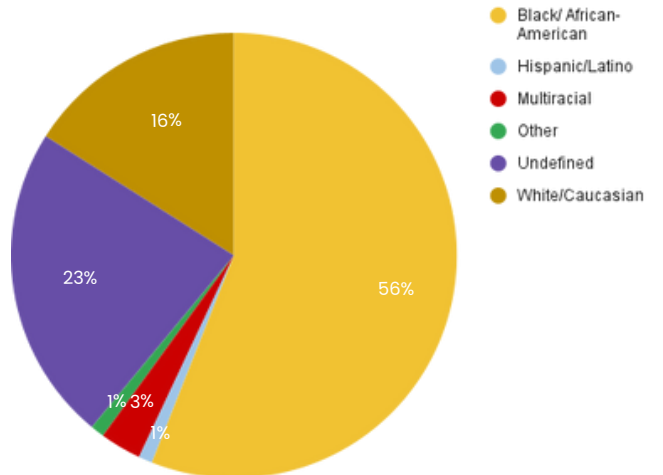
Clients distribution by Gender Identity



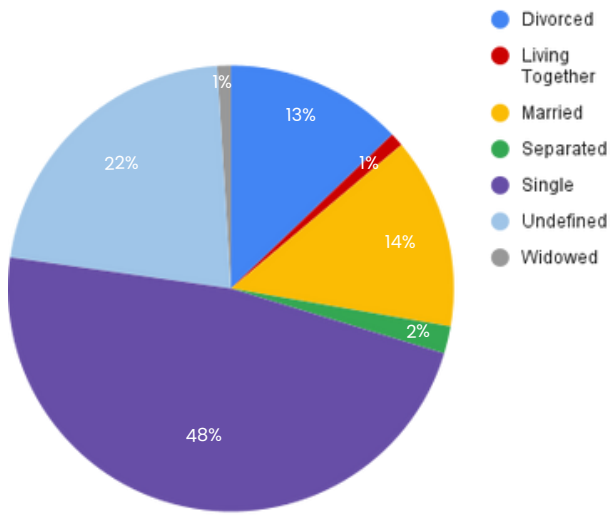
Clients distribution by Sexual Orientation



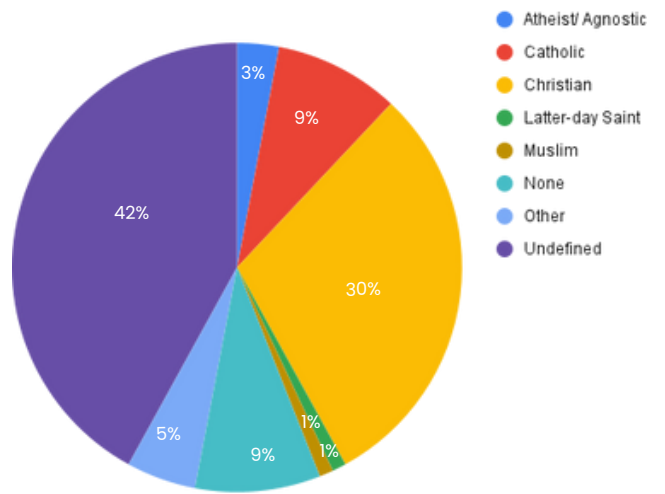
Clients distribution by Race



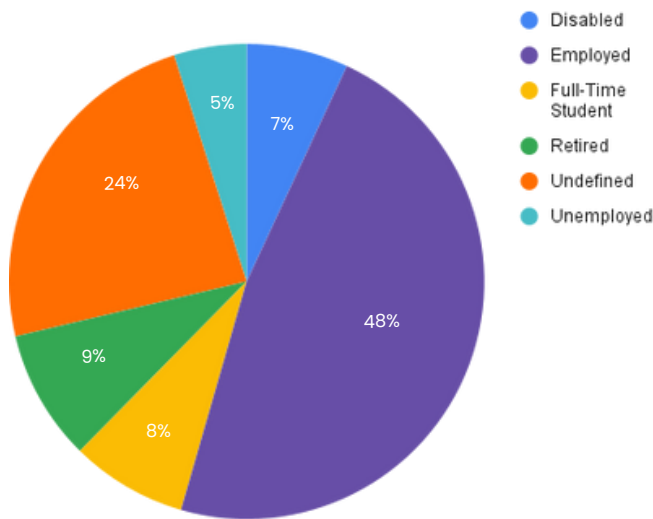
Clients distribution by Marital Status



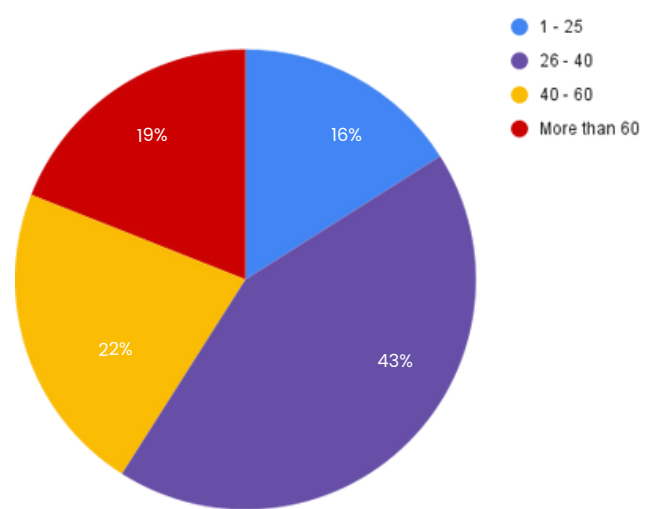
Clients distribution by Religion



Clients distribution by Employment



Clients distribution by Age





02

WHO ARE WE?





HISTORY

Originally founded in 2022 in the Northern Laurel area in Prince George County, Maryland. The agency was developed to meet the city's unmet need for mental health services.

According to Mental Health America's County and State Data Map (2024), In 2020, of the 948,337 Prince George County residents -

- * 8.0 per 100,000 score positive on PTSD screenings.
- * 29.84 per 100,000 score positive on depression screening (PHQ-9).
- * 32.47 per 100,000 residents score positive on suicide identifiers.
- * 26.4 per 100,000 residents identified as trauma survivors.
- * 10.02 per 100,000 residents are at risk for psychotic-like experiences.

Footnote: *Mental Health America, Inc. (2024). Mapping the Mental Health of Our Communities: Explore the data. Create change. Mental Health America Mapping.*
<https://www.mhanational.org/mhamapping/mha-state-county-data>



Harmony Wellness
Counseling &
Consulting Center, LLC



MISSION STATEMENT

At Harmony Wellness Counseling and Consulting Center, our mission is to accompany those in need to improve resilience, achieve self-sufficiency, and access culturally informed and comprehensive mental health services. We are dedicated to fostering emotional well-being and empowering individuals, families, and communities through personalized, compassionate care. We aim to create a supportive environment where everyone can thrive and reach their fullest potential.

VISION

To cultivate a harmonious and thriving community of diverse individuals, families, and groups empowered to accomplish their mental health, wellness, education, and career goals. We aspire to create an inclusive environment where everyone has the opportunity to flourish and achieve their fullest potential, fostering a society of resilience, self-sufficiency, and mutual support.



CORE VALUES

- ▶ **SKILLED:** We seek to use our knowledge and expertise to deliver the most effective service to the client while enabling self-sufficiency and self-reliance.
- ▶ **ACCOUNTABILITY:** We hold ourselves personally and collectively responsible for doing right and adhering to ethical principles in an environment of openness and honesty.
- ▶ **RESPONSIBILITY:** We act responsibly in our individual and collective actions and take accountability for outcomes and results.
- ▶ **DIVERSITY & INCLUSION:** Valuing differences creates a work environment where everyone can excel. Understanding others is key to delivering appropriate and caring services, and maintaining the client's dignity in all interactions.
- ▶ **EQUITY & QUALITY:** Resources/outcomes
- ▶ **SERVICE EXCELLENCE:** We are passionate about our people and the community, which is evident in how we deliver our services. We strive for the highest standards in all we do and seek continuous improvement.

GOALS

The goals of our outpatient mental health treatment are:

- ▶ To improve the quality of life through specialized treatment services and techniques designed to promote healthy living.
- ▶ To reduce hospital admission through a community-integrated approach to outpatient mental health treatment.
- ▶ To effectively decrease the prevalence and incidence of mental illness, emotional disturbance, and social dysfunction.
- ▶ To provide comprehensive outpatient mental health services for children, teens, young adults, adults, and seniors.





Harmony Wellness
Counseling &
Consulting Center, LLC

STATEMENT FROM THE CEO

As the CEO of Harmony Wellness Counseling and Consulting Center, I am deeply grateful for the unwavering support and dedication of our community, providers, clients, and staff. Since our inception, we have made remarkable progress in fulfilling our mission to improve mental health and wellness across the Maryland counties we serve. Our growth and success are a testament to our exceptional team's hard work, commitment, and clients' trust in us. We have created a compassionate and inclusive environment that empowers individuals and families to build resilience, achieve self-sufficiency, and access culturally informed, comprehensive mental health services. Thank you for being an integral part of our journey; your continued support is vital as we strive to reach even greater heights in the years to come.

In gratitude,



**LISA M.
FORD**

CEO/ Sr. Clinician
Clinical Social
Work/Therapist,
LCSW-C, LCSW, LICSW



TOGETHER WE THRIVE

At HWCCC, we are incredibly proud to highlight the numerous accomplishments of our dedicated staff at Harmony Wellness Counseling and Consulting Center. Our team has demonstrated exceptional commitment to professional growth and excellence. Many have pursued advanced training and earned specialized certifications, enhancing our capacity to provide the highest quality of care. As a small agency, our staff members have assumed key leadership positions and contributed their expertise to our strategic initiatives and clinical practices. Their ongoing pursuit of knowledge and professional development ensures that we remain at the forefront of the mental health field, delivering innovative and effective services to our clients. These achievements are a testament to their passion and dedication, and we are deeply grateful for their unwavering commitment to our mission.



OUR DYNAMIC TEAM



Lisa M. Ford,
CEO
Sr. Clinician



Daisia Williams,
Licensed
Clinical
Therapist



Elizabeth Geisman,
MSW intern



Tierra Reid,
Freelance
Graphic
Designer and
Owner of
S.I.T. Designs



Ashanti Agurs,
Administrative
and Billing
Specialist



Harmony Wellness
Counseling &
Consulting Center, LLC

TRAINING HOURS

40+

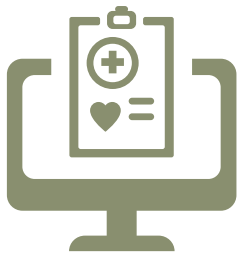
CEUs

2

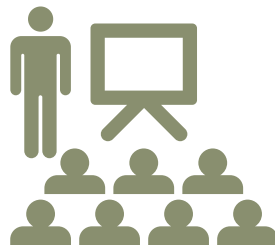
New Hire
Orientations



Insurance
Sponsored
Billing/Invoice



Theranest
Billing



Accelerated
Resolution
Training



Breaking the
Chains Trauma
Group

CERTIFICATIONS

- Grief Informed Professional
- Dialectical Behavior Therapy
- Clinical Trauma Professional Level II



03

WHAT WE DO



At Harmony Wellness Counseling and Consulting Center,



We proudly offer a comprehensive range of services catering to our community's diverse needs. Our offerings include individual, family, and couples counseling, addressing the unique challenges children, teens, young adults, adults, and seniors face. In addition to our paid services, we are deeply committed to giving back to the community through our Pro Bono program. This initiative provides essential mental health services to those who may not have the financial means to access care, ensuring that everyone has the opportunity to improve their well-being and resilience. Our Pro Bono services exemplify our dedication to fostering a supportive, inclusive community where all individuals can thrive, regardless of economic circumstances. Through these efforts, we strive to make a meaningful, positive impact on the lives of our clients and the broader community.



Harmony Wellness
Counseling &
Consulting Center, LLC

HOURS OF SERVICES PROVIDED

168+
hours

psychiatric diagnostic
evaluations

730+
hours

individual
counseling

12+
hours

family/ couples
counseling

58+
hours

hours of Pro
Bono Counseling



04

DONATIONS & FINANCES



Support comes in different shapes and sizes.



DONATIONS

100

Notebooks and
back-to-school supplies

5

Walmart Gift
Cards - \$50

FISCAL YEAR 2022-2023 FINANCIAL IMPACT/REVENUE

As we conclude the fiscal year at Harmony Wellness Counseling and Consulting Center, we are pleased to share a financial impact statement that underscores the diverse sources of revenue that enable us to deliver essential mental health services. Our funding is a robust mix, reflecting our commitment to accessibility and sustainability. Much of our revenue was derived from state and federal insurance funding, demonstrating strong support and trust in our mission from governmental bodies. Additionally, commercial insurance reimbursements played a vital role in sustaining our operations, ensuring that clients with various insurance plans could access our services. Lastly, self-pay contributions from clients further diversified our financial base, highlighting the value placed on our services by those seeking direct access to our care. This balanced revenue stream has allowed us to maintain high-quality services and expand our reach and impact within the community. We remain dedicated to transparent financial stewardship, ensuring that every dollar received is utilized to enhance our client's mental health and well-being.



MAKING AN IMPACT IN OUR COMMUNITY ONE CLIENT AT A TIME

PUBLIC INSURANCE

61%

Medicaid (MD)

0%

Medicaid (DC)

9.3%

Medicare

COMMERCIAL INSURANCE

17%

Carefirst/
BCBS

2%

United
Healthcare

1%

Tricare

3%

Cigna

7%

Client
payments

.6%

Consulting



This document was created by S.I.T. Designs.

***Graphic Designer & Owner: Tierra Reid
Contact me for your Graphic Design needs at sit.cmp@gmail.com
or by phone at 216-338-1008.***